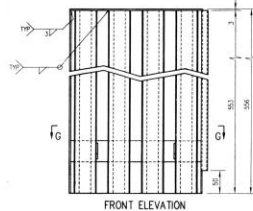
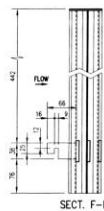
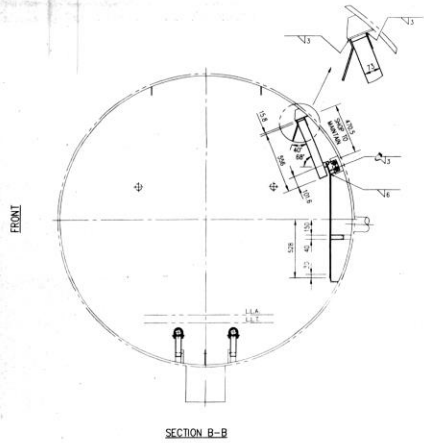
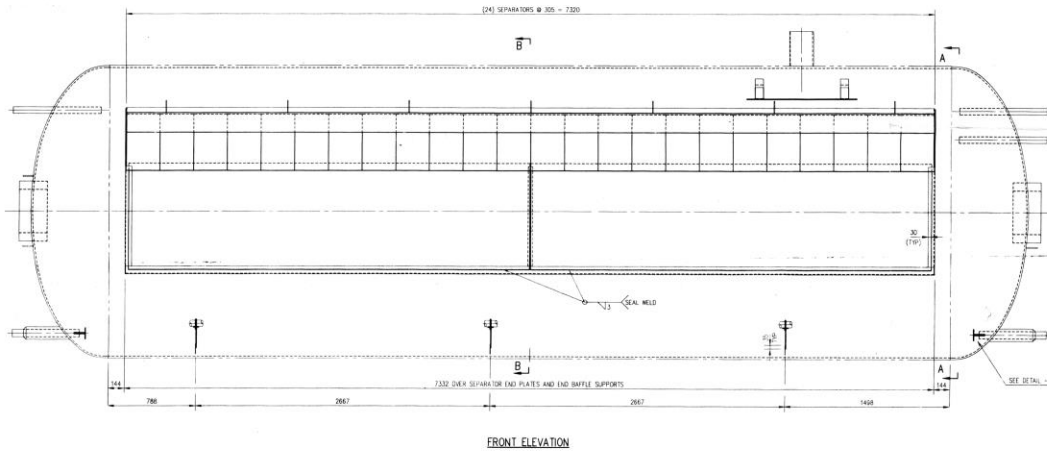


PART NO. MGA11114010000

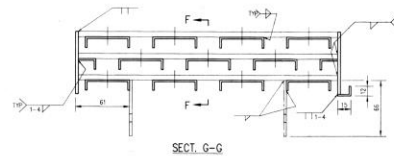
SEE NOTE NO. 2



SEPARATOR
Mat. 304

PART NO. MGA11114020000

SEE NOTE NO. 2



GENERAL NOTES

1- DO NOT SCALE THIS DRAWING. USE FIGURE DIMENSIONS ONLY.

2- FOR BAR DIFFERENT THAN MODULE A, BAR 1, THE PART NO. SHOULD FOLLOW THE BELOW TABLE:

MODULE A		MODULE B		MODULE C	
BAR NO.	DIGIT	BAR NO.	DIGIT	BAR NO.	DIGIT
1	1	2	2	3	3
2	2	3	3	4	4
3	3	4	4	5	5
4	4	5	5	6	6

3- PROCEDURE FOR PART NO. DESIGNATION
THE PART NO. IS COMPOSED OF 14 DIGITS.
THE MEANS OF EACH DIGIT IS AS FOLLOWING:
THE FIRST TWO DIGIT IS FOR PROJECT NAME.
THE THIRD DIGIT IS MODULE NO.
THE FOURTH DIGIT IS BOILER NO.
THE SIX DIGITS FROM 5 TO 10 IS ASSY NO.
THE DIGITS 11 IS FOR ASSY NO. EXTENSION.
THE TWO DIGITS 12,13 ARE SPARES.
THE LAST DIGIT IS FOR LEFT OR RIGHT SIDE.

EXAMPLE:
M101150000000
M10 MONTEZER DRUM
10 MODULE A
1 BOILER 1
110001 ASSY NO. 1101-01
L LEFT SIDE

REFERENCE DRAWINGS

ARRGT. OF 104" I.D. L.P. DRUM D-1763-9150-084
DRUM INTERNAL PIPING

APPROVED FOR CONSTRUCTION
MINISTER OF ENERGY
MINISTRY OF ENERGY
10 NOV 1973

MAPNA Co.
EDM APPROVAL

FOR ERECTION
REV. DATE

NO.	DATE	DESCRIPTION
1	10/11/73	FIRST ISSUE
2	10/11/73	REVISED

MINISTRY OF ENERGY
TAYANER
ARRGT. OF 104" I.D. L.P. DRUM GENERAL INTERNALS FOR BOILERS #1, #2 & #3

MAPNA Co.
FOSTER WHEELER ENERGAS S.A.
FOSTER WHEELER ENERGAS S.A. (S.A. DE ENERGIA)
FOSTER WHEELER ENERGAS S.A. (S.A. DE ENERGIA)
FOSTER WHEELER ENERGAS S.A. (S.A. DE ENERGIA)

SCALE: 1:10
DATE: 10/11/73

DESIGNED BY: [Name]
CHECKED BY: [Name]
DRAWN BY: [Name]

NP-MGC-MB-13-HDI-020 / 0